

Geographic Information Systems (GIS) at SeaTac

2/22/2022



Presentation Overview

PURPOSE OF PRESENTATION

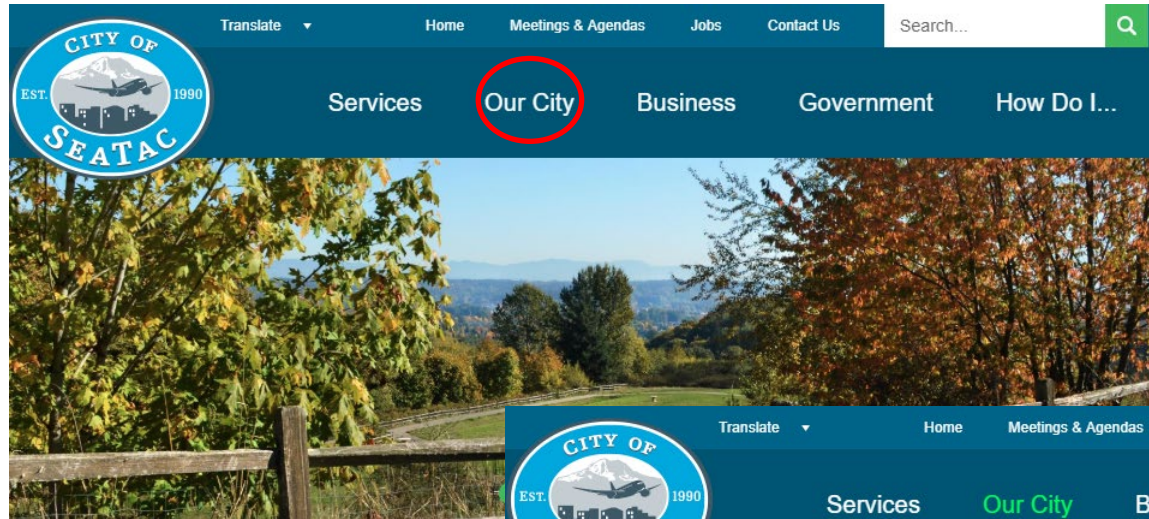
To provide a brief orientation to the GIS Applications available to the public, and how GIS supports City Operations.

WHY IS THIS ISSUE IMPORTANT?

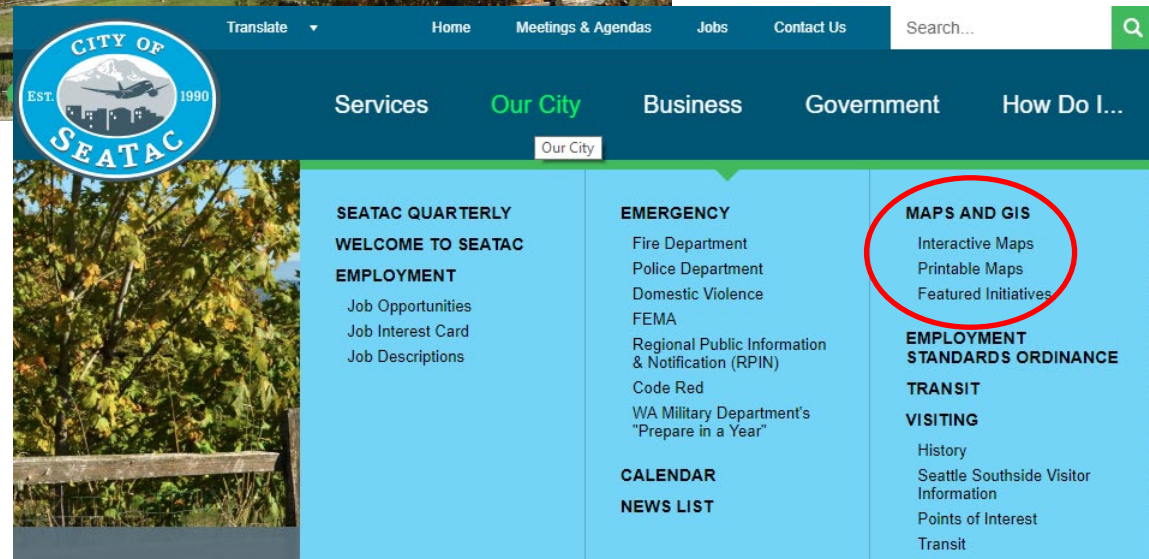
1. Spatial data is useful for understanding the landscape of our city.
2. SeaTac GIS provides data and maps to communicate information about public facilities and resources in our community.
3. GIS data and solutions support City Operations.



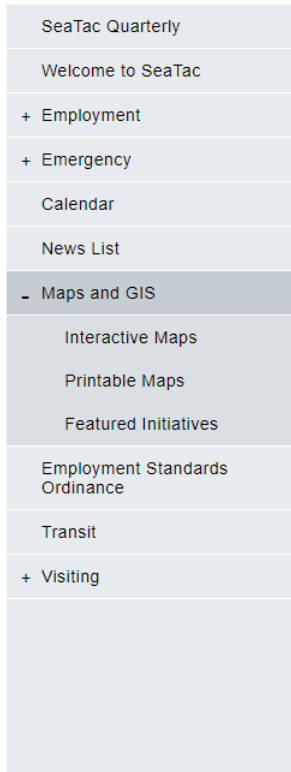
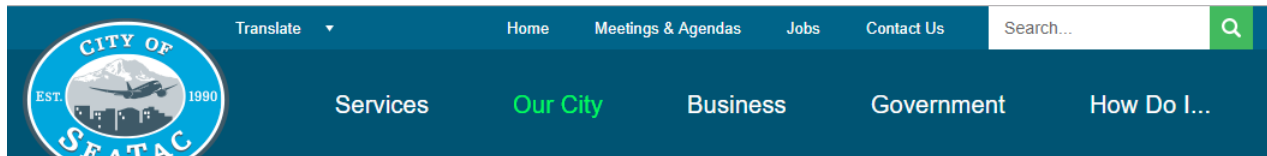
Location of GIS Resources



<https://www.seatacwa.gov/>



Maps and GIS



[Our City »](#)

MAPS AND GIS

Font Size: [+](#) [-](#) [Share & Bookmark](#) [Feedback](#) [Print](#)

Welcome To The City Of SeaTac's Maps And GIS Pages

"A geographic information system (GIS) provides a framework for gathering and organizing spatial data and related information so that it can be displayed and analyzed." Wade and Sommer



The City of SeaTac's maps and Geographic Information System (GIS) pages provide both City staff and the public with map based information resources designed to help users explore and better understand their community. Printable and web based interactive maps hosted by the City of SeaTac can be accessed through the menu on the left side of the page, by selecting one of the resource links provided below, or by going directly to the City's map [Gallery](#). If you would like to download or connect to the City's publicly available data services, you may go the City's Data Hub .



<https://www.seatacwa.gov/our-city/maps-and-gis>



- Interactive Maps
- Printable Maps
- Featured Initiatives
- Data Hub

Maps and GIS > Interactive Maps



Translate ▾

Home

Meetings & Agendas

Jobs

Contact Us

Search...

Q

Services

Our City

Business

Government

How Do I...

Projects & Studies

SeaTac Quarterly

Welcome to SeaTac

+ Employment

+ Emergency

Calendar

News List

- Maps and GIS

Interactive Maps

Printable Maps

Featured Initiatives

Employment Standards Ordinance

Transit

+ Visiting

Our City > Maps and GIS >

INTERACTIVE MAPS

Font Size: + - + Share & Bookmark Feedback Print

Welcome To The City Of SeaTac's Web Based Mapping Application Pages

The City of SeaTac's interactive maps page consist of a collection of publicly available online maps designed to keep residents and visitors informed. The City's interactive web maps are available for use within most web browsers and, in some cases, tablets and mobile devices. Information regarding the general Use Limitations of these web maps, and other Maps and GIS products, is provided on the City of SeaTac's [Maps and GIS](#) page. More specific information regarding limitations of use may also be found within each individual web map.

Featured Interactive Maps

A selection of commonly requested interactive maps is provided here and on the City's [Map Portal](#). For a full list of the City's interactive maps, please visit the City's map [Gallery](#).

Web App

Project Activity

Story Map

Central SeaTac Story Map

Web App

Stormwater Infrastructure

Web App

General Information

Web App

Emergency Preparedness

Web App

Zoning and Planning

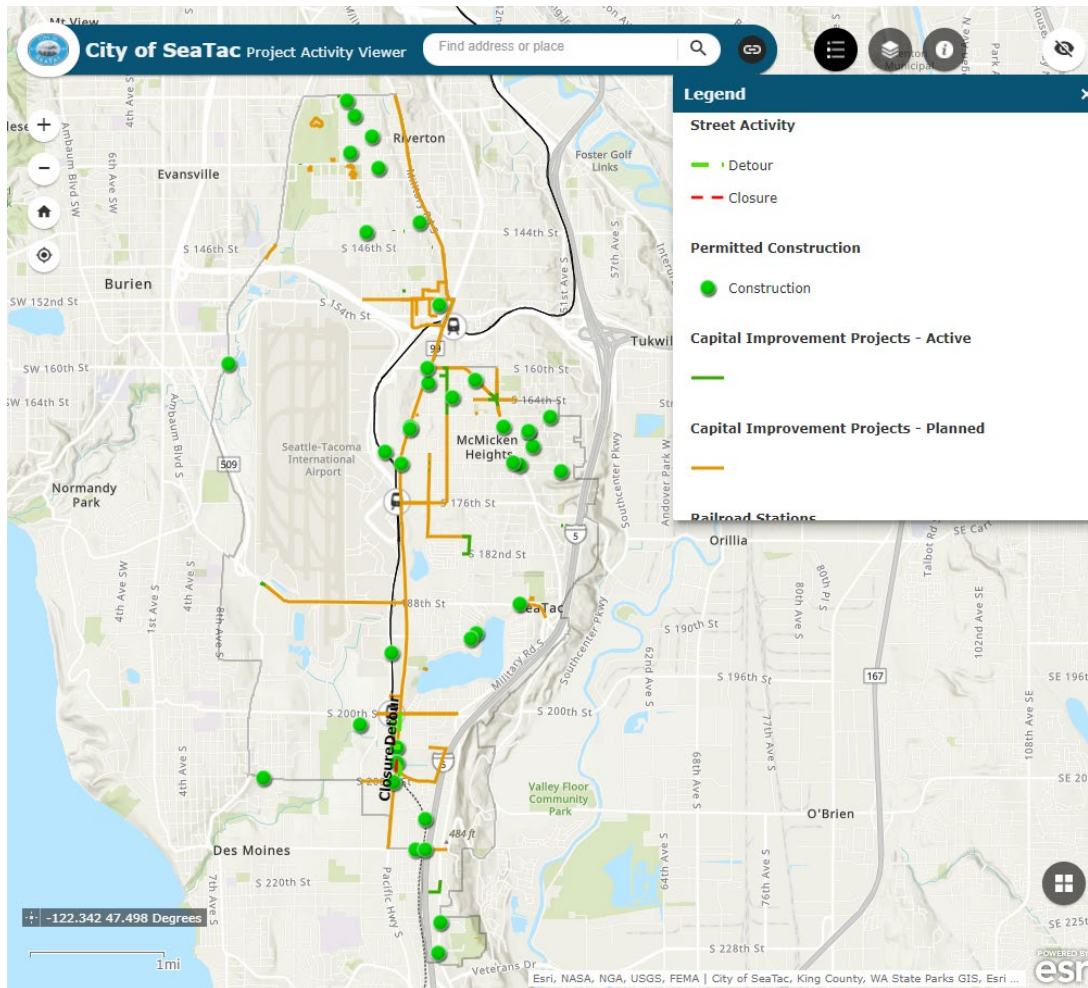
Open Map by hovering over tile,
and then click on View App




View App

<https://www.seatacwa.gov/our-city/maps-and-gis/interactive-maps>



Maps and GIS > Interactive Maps > Project Activity



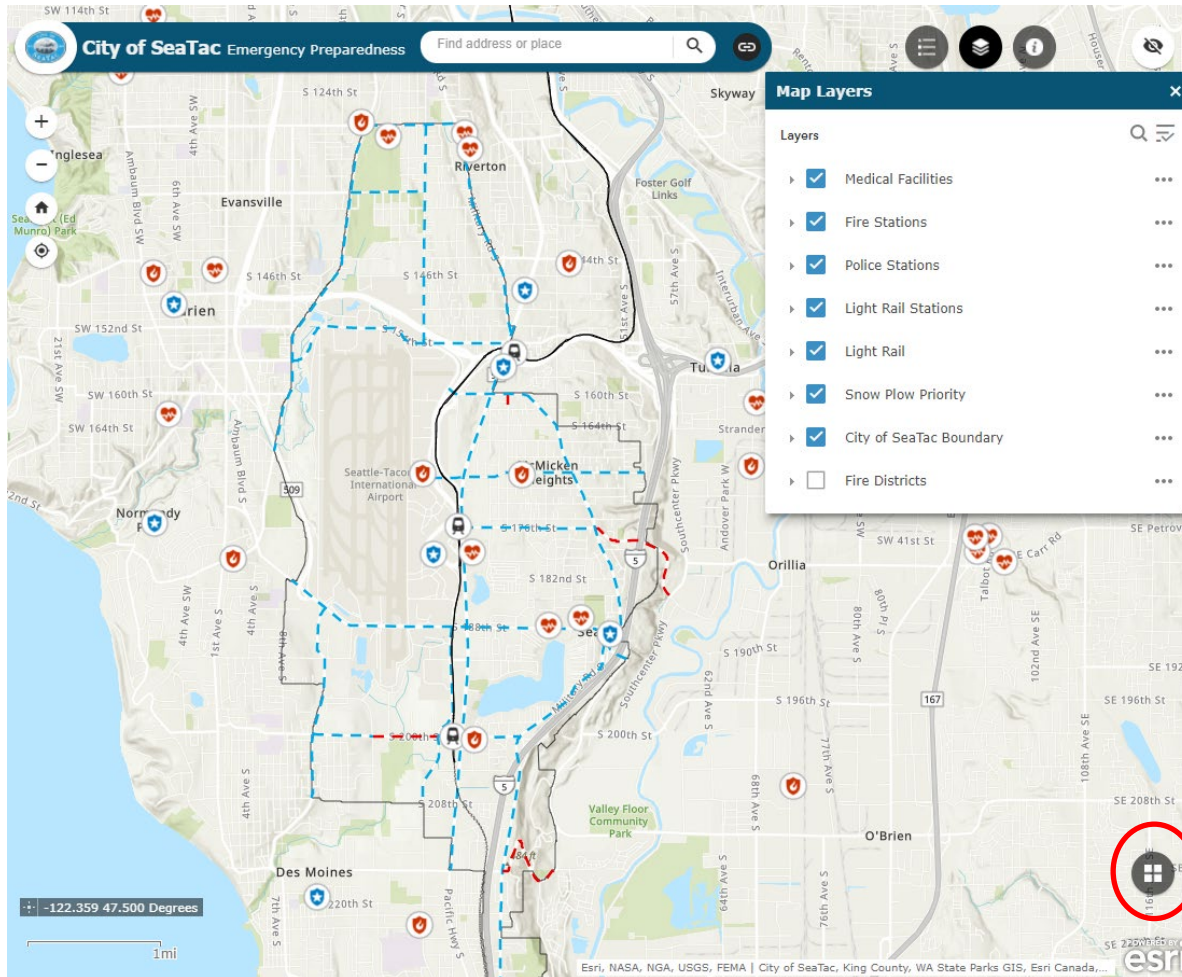
-  Legend
-  Layer List
-  About

- Zoom in/out
- Pan (move around)
- Click on projects for more information
- Search for address

<https://www.seatacwa.gov/our-city/maps-and-gis/interactive-maps>



Maps and GIS > Interactive Maps > Emergency Preparedness



- Turn layers on/off
 - Medical
 - Fire
 - Police
 - Light Rail
 - Snow Plow Priority
 - Fire District
- Change Basemap

<https://www.seatacwa.gov/our-city/maps-and-gis/interactive-maps>



Maps and GIS > Printable Maps



The screenshot shows the City of SeaTac website. The top navigation bar includes links for Translate, Home, Meetings & Agendas, Jobs, Contact Us, and a search bar. Below this is a secondary navigation bar with links for Services, Our City (highlighted in green), Business, Government, and How Do I... On the left side, there is a sidebar menu with links for SeaTac Quarterly, Welcome to SeaTac, Employment, Emergency, Calendar, News List, Maps and GIS (selected), Interactive Maps, Printable Maps, Featured Initiatives, Employment Standards Ordinance, Transit, and Visiting. The main content area is titled "Our City > Maps and GIS > PRINTABLE MAPS". Below the title, there is a welcome message and a paragraph explaining that a selection of commonly requested printable maps is provided for public use. The maps are available in PDF format and can be viewed within most web browsers or downloaded for use in a PDF reader. The maps are displayed in a grid of six thumbnails, each with a "Printable Map" label on the left. The thumbnails are: 1. Permit Parking Area, 2. Traffic Signals (Flashing Yellow), 3. Development Pipeline Map, 4. Snow Plowing and Closures, 5. Zoning Map, and 6. Comprehensive Plan Map. Each thumbnail also has a "Printable Map" label on the left.

SeaTac Quarterly

Welcome to SeaTac

+ Employment

+ Emergency

Calendar

News List

Maps and GIS

Interactive Maps

Printable Maps

Featured Initiatives

Employment Standards Ordinance

Transit

+ Visiting

Our City > Maps and GIS >

PRINTABLE MAPS

Font Size: [+](#) [-](#) [Share & Bookmark](#) [Feedback](#) [Print](#)

Welcome To The City Of SeaTac's Printable Maps Pages

A selection commonly requested printable maps for exploration and download is provided here for public use and within the City's map [Gallery](#). These maps are provided in Portable Document Format (PDF) and can be viewed within most web browsers or, once downloaded, within a PDF reader such as Adobe Reader. Information regarding the Use Limitations of these maps, and other Maps and GIS products, is provided on the City of SeaTac's [Maps and GIS](#) page.

Printable Map: Permit Parking Area

Printable Map: Traffic Signals (Flashing Yellow)

Printable Map: Development Pipeline Map

Printable Map: Snow Plowing and Closures

Printable Map: Zoning Map

Printable Map: Comprehensive Plan Map

- Comprehensive Plan
- Zoning
- Sewer Districts
- Water Districts
- Snow Plow and Closure Priority
- Parks and Trails
- Walking Map
- Streets
- Permit Parking Area
- Pavement Overlay
- Development Pipeline
- Steep Slopes
- Wetlands and Streams

<https://www.seatacwa.gov/our-city/maps-and-gis/printable-maps>



Maps and GIS > Data Hub



City of SeaTac, Washington's Data Hub

This is the community's public platform for discovering, exploring, and downloading open data.

Search for City Data

Data Categories

The City of SeaTac's Open Data Hub provides both City staff and the public with map-centric information resources. Datasets hosted by the City of SeaTac can be accessed by using the Search Bar (Above) or by selecting one of the following data categories.



All Data



Planning Layers



Public Works



Reference Layers

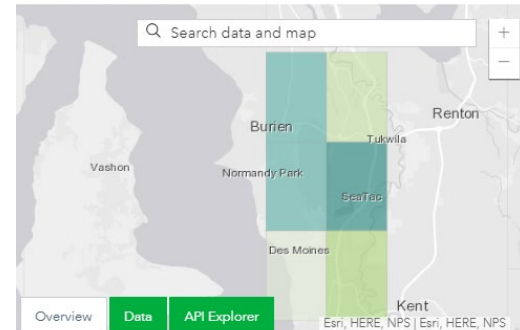
- Search for data
 - Stormwater
 - Zoning
 - Comprehensive Plan
- Select layer
 - View data
 - Download data



City of SeaTac, Washington's Data Hub

Catchbasins and Manholes

Last updated 6 days ago | 8,357 Records

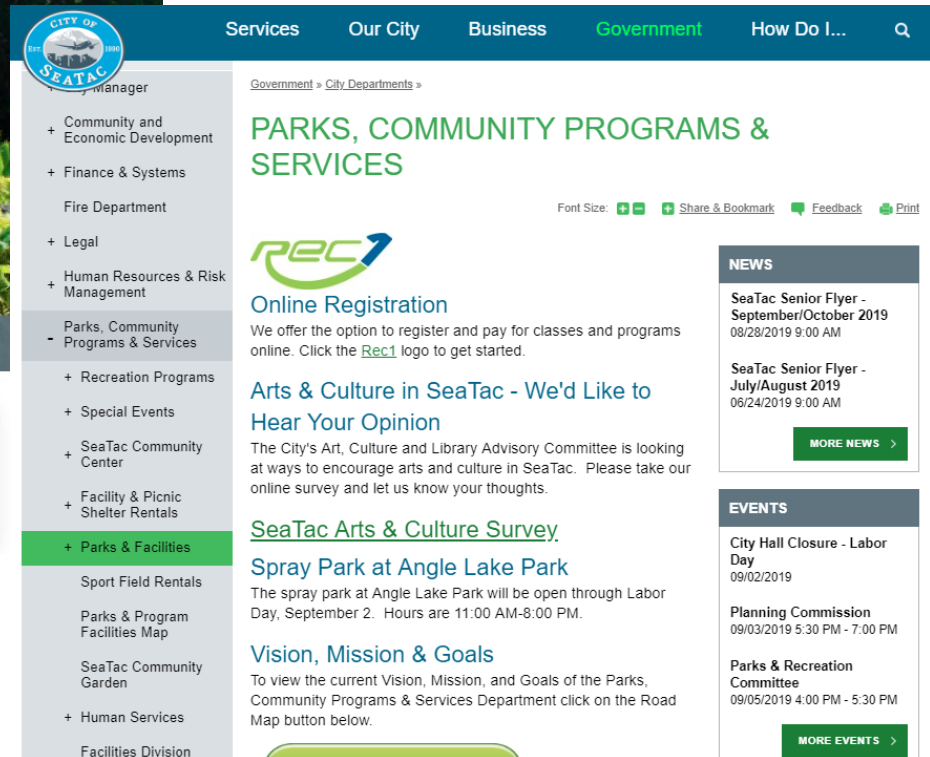
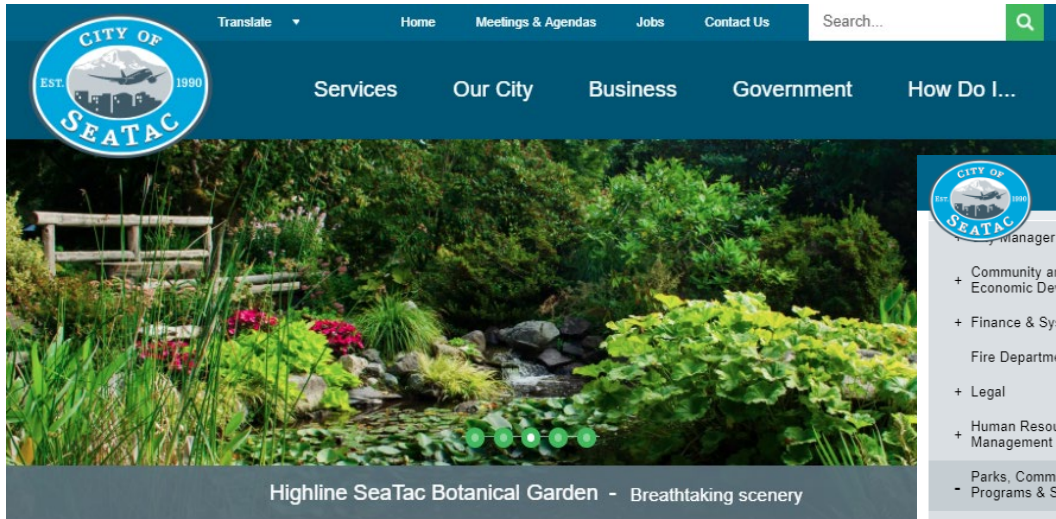


8/23/2019 Feature Layer Custom License
Download APIs

<https://data-cityofseatac.opendata.arcgis.com/>



Our City > Parks & Recreation



<https://www.seatacwa.gov/government/city-departments/parks-community-programs-services>



Our City > Parks & Recreation > Parks & Facilities



The screenshot shows the City of SeaTac website. The top navigation bar includes links for Translate, Home, Meetings & Agendas, Jobs, Contact Us, and a search bar. Below this is a secondary navigation bar with links for Services, Our City, Business, Government (highlighted in green), and How Do I... The left sidebar contains a menu with categories like Calendar, City Council, Municipal Court, City Departments, City Manager, Community and Economic Development, Finance & Systems, Fire Department, Legal, Human Resources, Parks, Community Programs & Services, Recreation Programs, Special Events, SeaTac Community Center, Facility & Picnic Shelter Rentals, Parks & Facilities, and SeaTac Community Center. The main content area is titled 'PARKS & FACILITIES' in green. Below this is a section for 'PARK HOURS' with text stating that all city parks are open from dawn until dusk, with a note about the gate at Angle Lake Park. There are six park amenity images arranged in a 2x3 grid, each with a 'Park Map' link. The images show various park features like paths, gardens, playgrounds, and picnic areas. At the bottom of the grid are navigation arrows.

Calendar

- + City Council
- + Municipal Court
- City Departments
 - + City Manager
 - + Community and Economic Development
 - + Finance & Systems
 - + Fire Department
 - + Legal
 - + Human Resources
 - Parks, Community Programs & Services
 - + Recreation Programs
 - + Special Events
 - + SeaTac Community Center
 - Facility & Picnic Shelter Rentals
 - Parks & Facilities
 - SeaTac Community Center

Government » City Departments » Parks, Community Programs & Services »

PARKS & FACILITIES

Font Size: [A](#) [A](#) [A](#) [Share & Bookmark](#) [Feedback](#) [Print](#)

PARK HOURS

All City of SeaTac parks are open from dawn until dusk.
(The gate at Angle Lake Park is unlocked by 8:00 AM. Picnic shelter rentals start at 11:00 AM.)

Park Map
North SeaTac Park/Sunset PL...

Park Map
Gardens in SeaTac

Park Map
Angle Lake Park Amenities

Park Map
Valley Ridge Park Amenities

Park Map
Riverton Heights Park Ameni...

Park Map
McMicken Heights Park Amen...

« »

Story Map Applications combine maps with clickable locations, pictures, and additional links

Started as a collaborative project between GIS Staff, Parks Staff, and UW GIS Student Group.

Maintained and updated by Parks Staff.

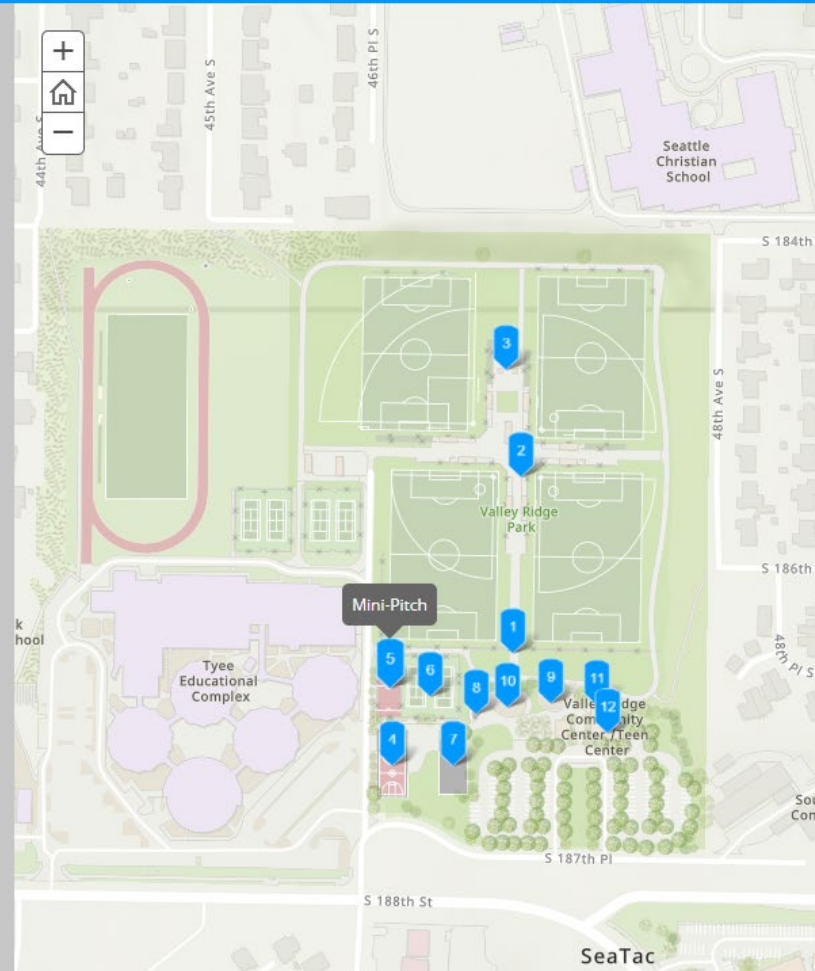
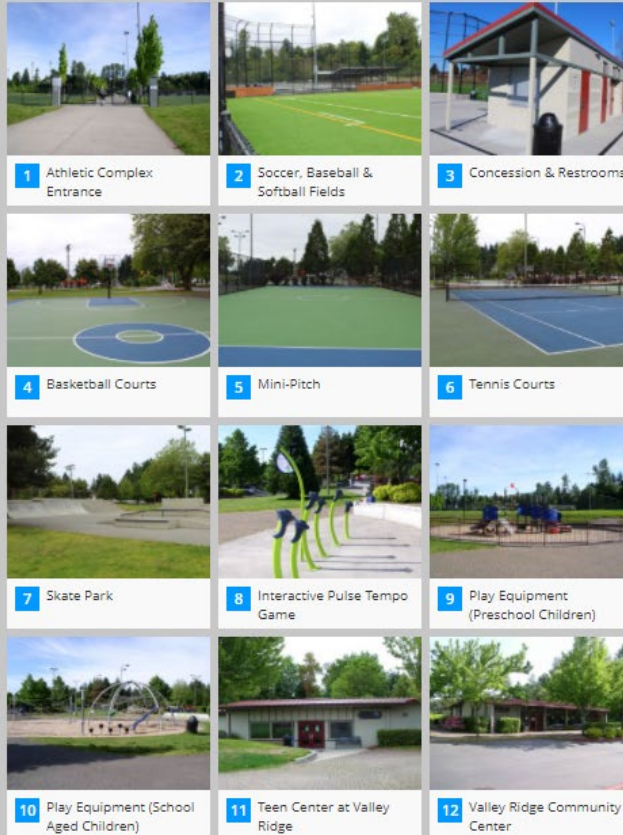
<https://www.seatacwa.gov/government/city-departments/parks-community-programs-services/parks-facilities>



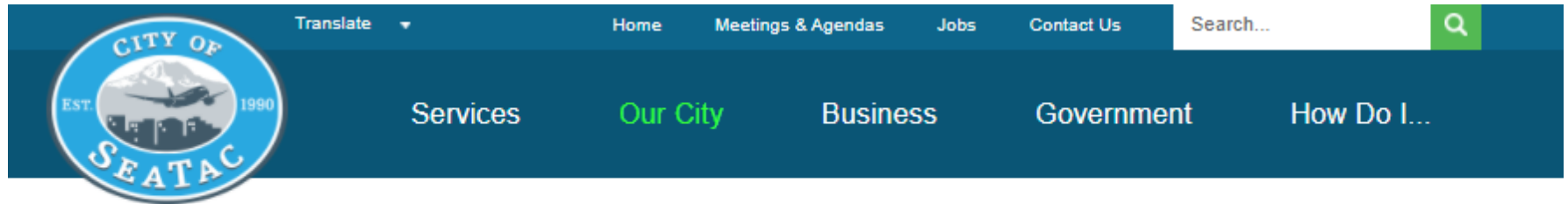
Our City > Parks & Recreation > Parks & Facilities

Valley Ridge Park Amenities

City of SeaTac Parks, Community Programs & Services



Our City > Projects & Studies > Central SeaTac Story Map



Projects & Studies
SeaTac Quarterly
Welcome to SeaTac
+ Employment
+ Emergency
Calendar
News List
+ Maps and GIS

[Our City »](#)

PROJECTS & STUDIES

Font Size: [+](#) [-](#) [+ Share & Bookmark](#) [Feedback](#) [Print](#)

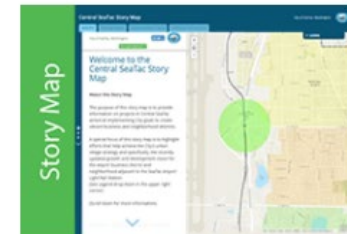
A lot is happening here in the City. Click on the projects and studies below to learn more about these exciting projects.



SR509 Expansion



**Riverton Heights
Neighborhood Park-
Phase 2**



**Central SeaTac Story
Map**

<https://www.seatacwa.gov/our-city/current-projects-studies>



Our City > Projects & Studies > Central SeaTac Story Map

Central SeaTac Story Map

[Welcome](#)[Planning Projects](#)[Road and Safety Projects](#)[Pedestrian Improvements](#)

City of SeaTac, Washington

Welcome to the Central SeaTac Story Map

Featured Projects

The projects featured in this story map include:

Planning Projects

- City Center Plan Update Project
- SeaTac Housing Action Plan Project

Road & Corridor Safety Projects

- International Boulevard Pedestrian Safety Study (orange line)
- Local Road Safety Plan

Pedestrian Improvement Project

- Airport Station Area Pedestrian Improvement Project (green line)

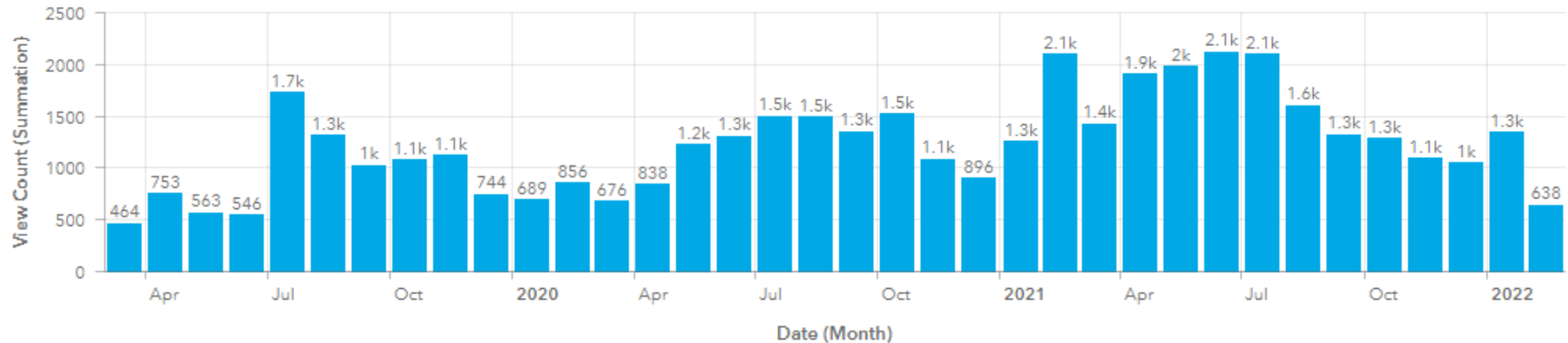
For more information on each of the projects click on the project tabs near the top of the screen.



GIS Public Map Viewer Usage

AGOL Monthly Viewer Counts

Chart depicts public viewer counts by month since recording began.



Note: Internal usage of public apps currently cannot be separated from Public usage. Additionally, usage resulting from initial GIS Support development and ongoing maintenance cannot be separated; however, should be generally limited and typically influences discrete days and not the overall pattern of use.

Public Viewer Usage

60 day total counts and daily averages.

SeaTac Data Hub

Total Views: 825 - Average Views: 13.5

Zoning and Planning

Total Views: 272 - Average Views: 4.5

North SeaTac Park/Sunset Playfields

Total Views: 238 - Average Views: 3.9

Project Activity

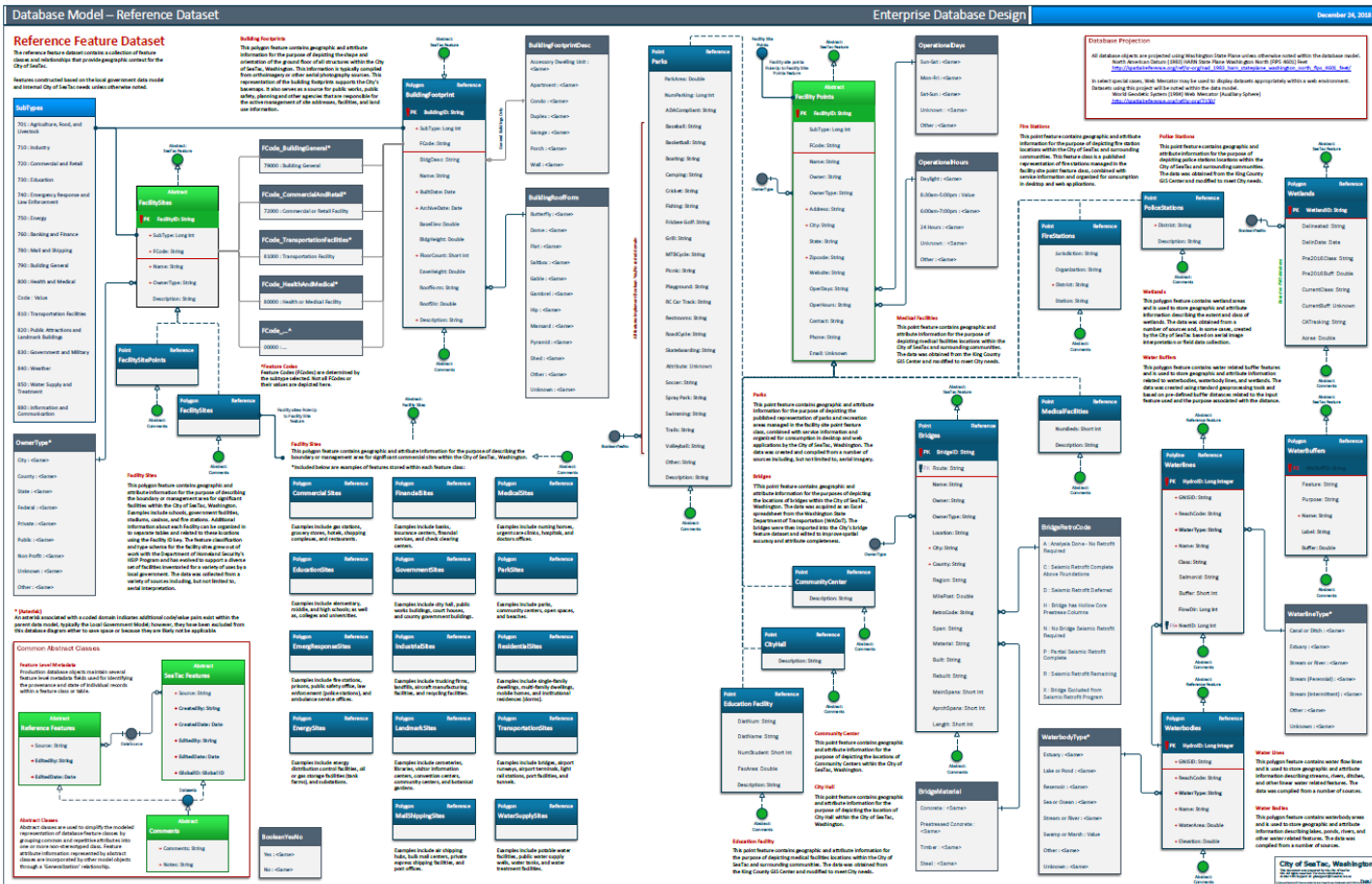
Total Views: 224 - Average Views: 3.7

General Information

Total Views: 187 - Average Views: 3.1



GIS Support of City Operations > Enterprise Data

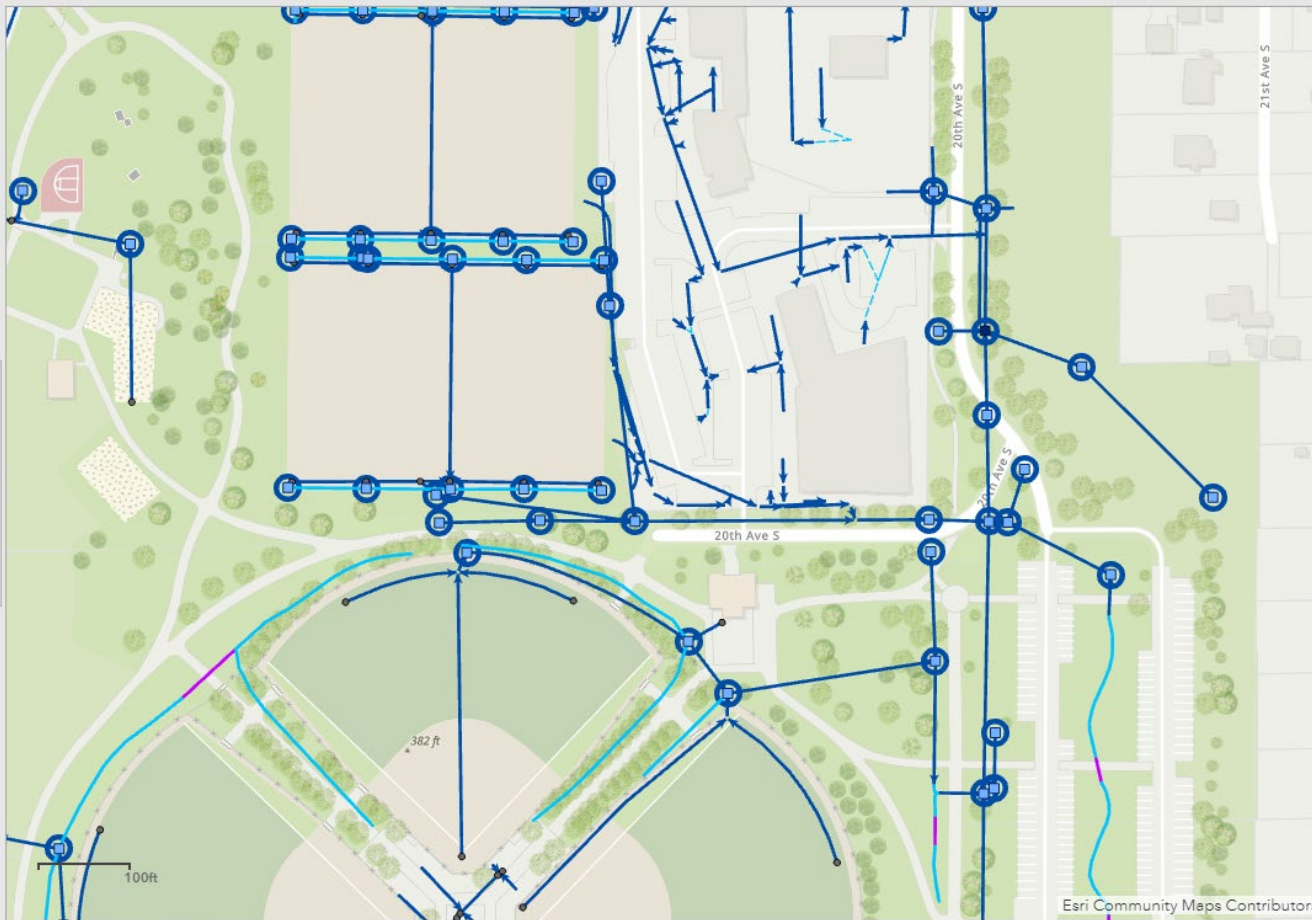


Enterprise Data Management

- Standardized Data
- Common Operating Picture
- Data Deliverable Standards

GIS Support of City Operations > Asset Management

Stormwater Catch Basin Inspection Program Dashboard

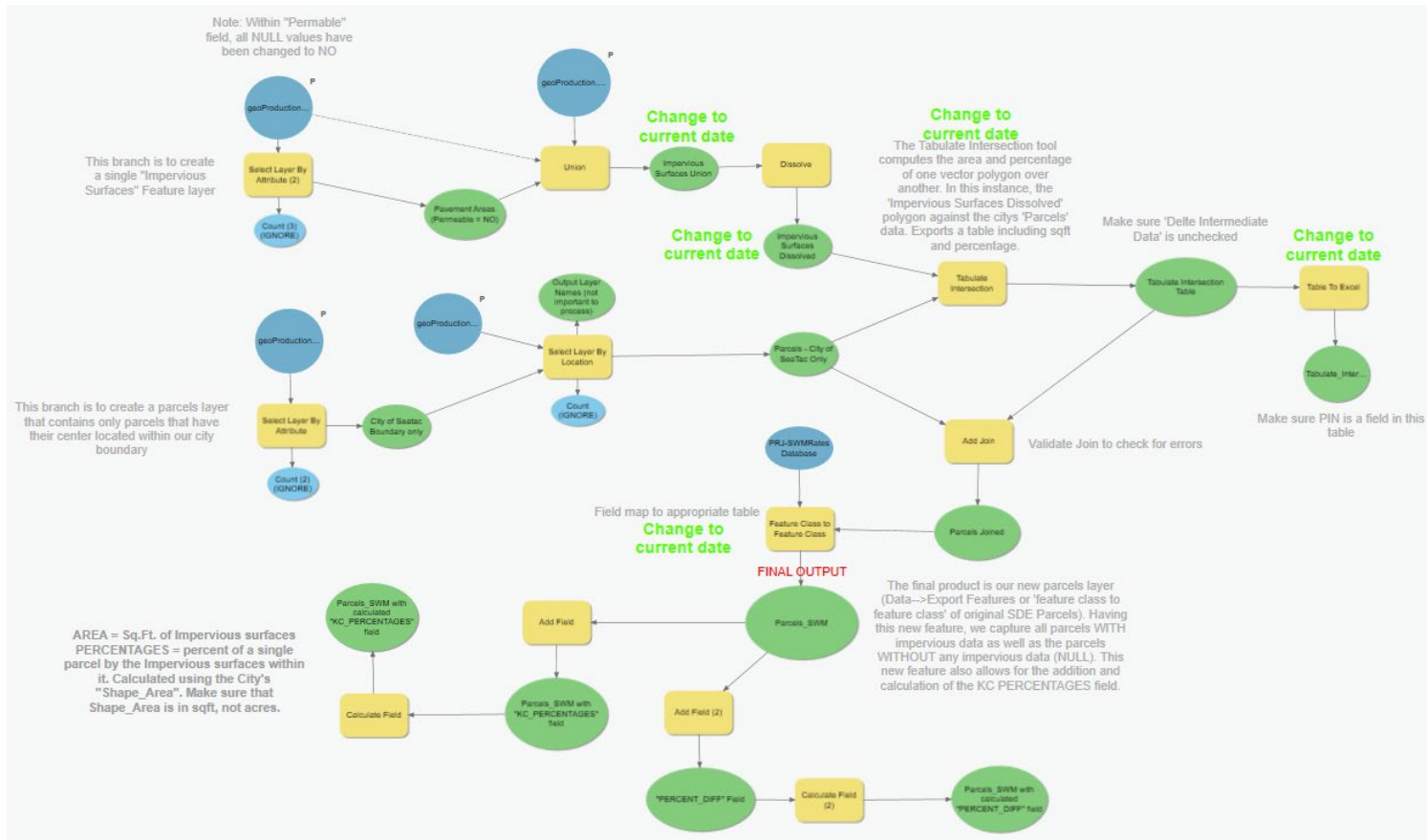


The Stormwater Catch Basin inspection web map focuses on Catch Basin related Work Orders that currently have a status of Open or Paused and Catch Basin Inspections

Asset Management

- Asset Inventory
- Integration with Work Management Software

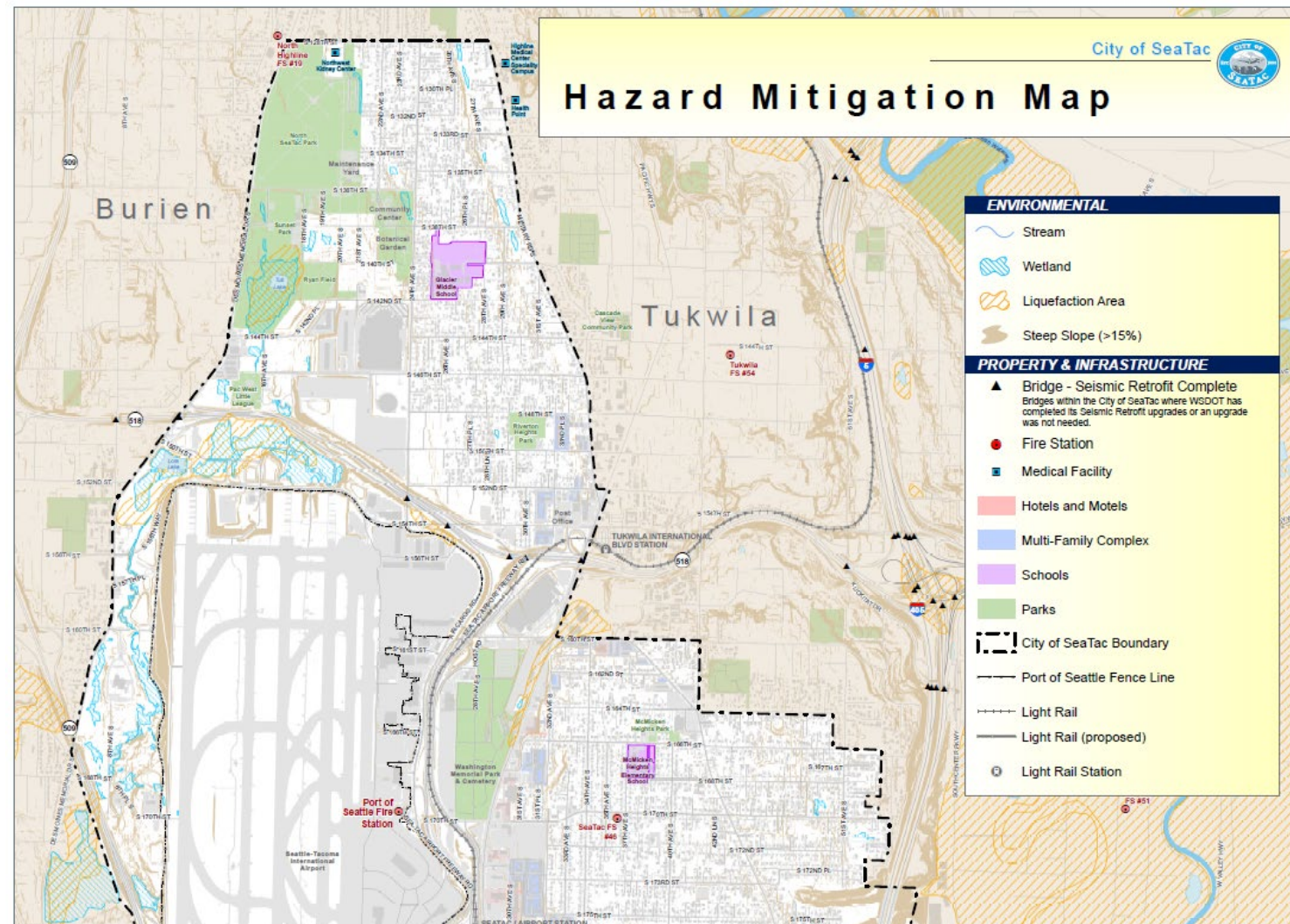
GIS Support of City Operations > Analysis



Analysis

- Impervious Surfaces
- Growth Management

GIS Support of City Operations > Emergency Management



Emergency Management

- Preparedness
- Response

Presentation Conclusion

GIS and Web Mapping Solutions are Useful Tools for

- Understanding the landscape of our city
- Communicating information about facilities and resources in our community
- Creating efficiencies
- Supporting city operations

